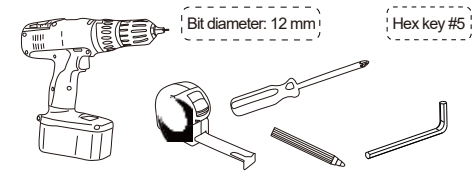
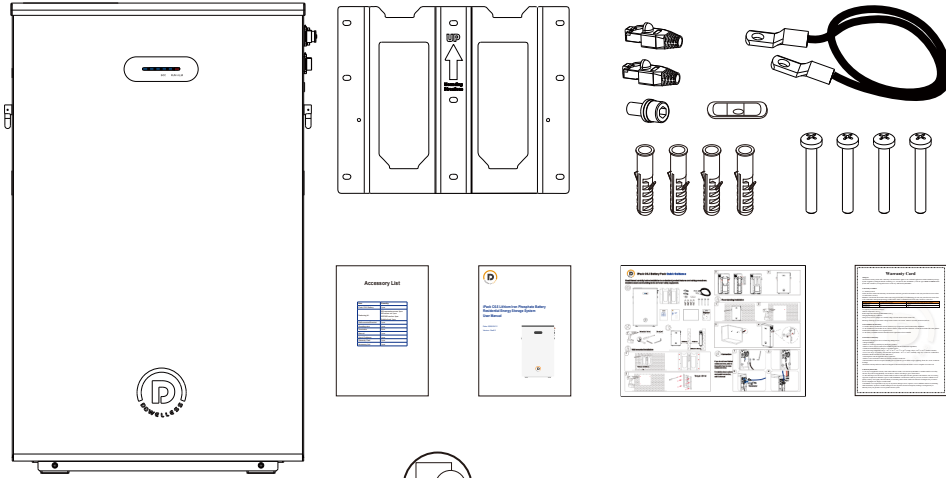




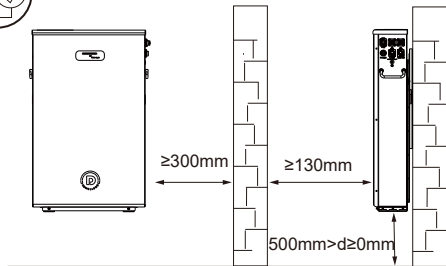
iPack C6.5 Battery Pack Quick Guidance

Read Manual carefully before installation to understand product features and safety precautions. Installers must use insulating tools and wear safety equipment.

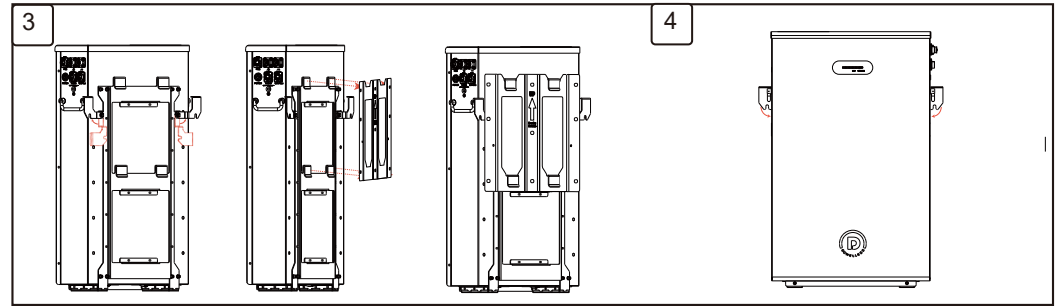
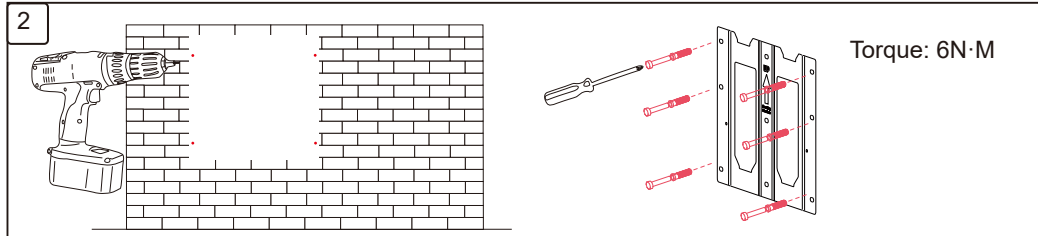
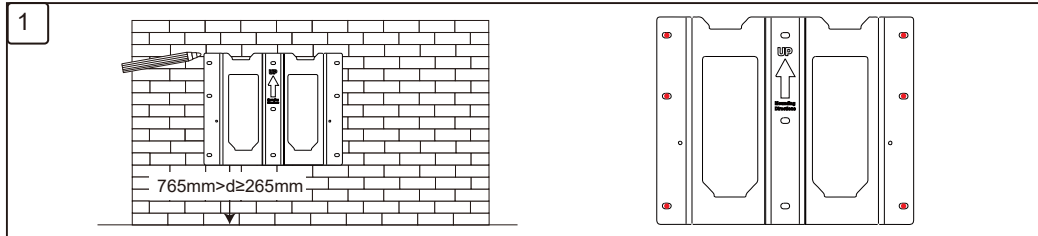


Bit diameter: 12 mm

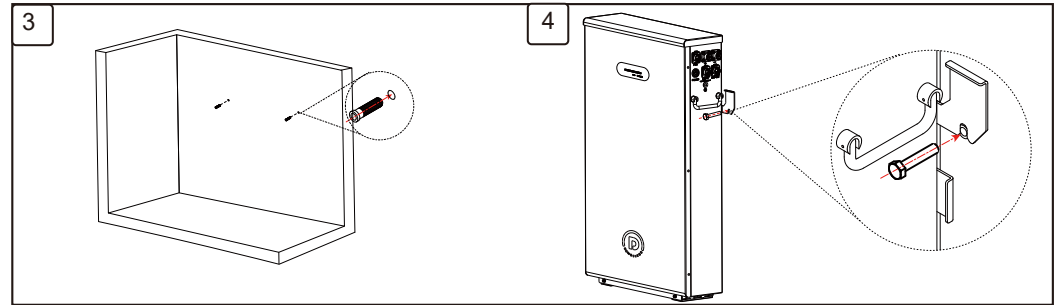
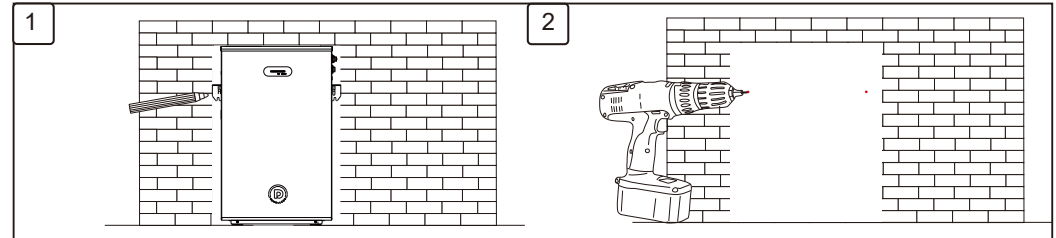
Hex key #5



Wall-mounted Installation



Floor-standing Installation



Connection

If you do not have finished cables and wires, refer to Manual for how to make cables and wires.

For details about cautions and parallel connection, refer to Manual.

